



Elegantly simple, for dramatic, affordable images
Many times lighter than fixed frame display systems

Structure without the weight....

Xtra Lite 1: The Original



Light, Compact, Easy to Use

Under 3 lbs., sets up instantly, fun to travel with. Rolls into handy 3" diameter travel case that goes anywhere.

Full Visual Impact

Elegantly displays entire image using precise, patented tension.

Broad Applications

Retail display, advertising, marketing support, recruiting, speaker and branding support, semi-permanent or on the move.

Quality Performance

The image architecture of choice for global printer manufacturers, airlines, hotels, publishers, associations—leading travel industry PR tool.

Economical, Reusable

Costs less to buy, use and ship. No more shocking S&H charges.

Simple to Order, Superior Graphics

Just choose your image size requirements below. Our graphics experts can do the rest.

For graphics that can easily get carried away!



Easily fits in overhead compartment on most planes.



Fits in 3" travel case

Xtra Lite 1 Stand Alone Series

Just choose the size of your image, depending on how and where you plan to use it. We also do great digital graphics!

Item No.	XL1 Vertical, Stand Alone	Proven Applications
XL12460	24" X 60" (61cm x 152cm)	Bank lobby, retail, smaller group presentations
XL13072	30" X 72" (76cm x 183cm)	Hotel, stage, product and service presentations Full 15 sq. ft. surface – most popular size by far.
XL13684	36" X 84" (91cm x 213cm)	Larger venue seminars and conferences, event, trade show displays, travel and tourism industry favorite.
XL1 Horizontal Series		
XLH3672	36" X 72" (91cm x 183cm)	Tabletop graphics for events, seminars, and conferences.



Most Popular Sizes

30" x 72" Xtra Lite 1

The versatile 30" x 72" Xtra Lite 1 works for any gathering, conference room presentation, lobby, or store display. **Most popular model** by far, with thousands of top industry references.



36" x 72" Xtra Lite 1 Horizontal

Popular 36" x 72" horizontal models offer the same impact, shipping, and storage benefits for tabletop displays.



36" x 84" Xtra Lite 1

For larger conference and seminar venues and expos, the 36" x 84" XL1 is a travel industry and association favorite worldwide.

for nearly weightless walls and columns

XL2 Series: Snap Together Two or More Panels in Seconds

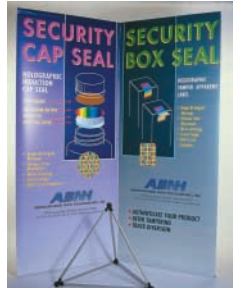


XL2 15" x 84", 2 units

XL2 Defined

Designed for two or more graphics, the Xtra Lite 2 is simply an "X" with connecting top and bottom banner poles. Use slim profile XL2 units to make a space saving backwall or imposing tower many times lighter than conventional "portables". Under 3 lbs. per section!

Two Graphics



XL2 36" x 84", 2 units



Xtra Lite 2 graphic panels snap together with a simple joint, for straight or angled connections.



XL2 structures are so simple, just an "X" for each panel.

Two Graphics



XL2 36" x 84", 2 units

Three Graphics



XL2 36" x 84", 3 units



Takes no space

XL2 Features

- Space Saving
- Flexible, Durable
- Visually Striking
- Under 3 lbs. per graphic

Multi Graphics



XL2 30" x 84", 7 units

Xtra Lite 2 Multi Graphic Series

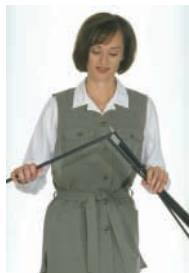
Just sketch a wall or structure to determine how many panels you need. We offer superior grade graphics to fit your needs.

Item No.	XL2 Panel Sizes	Popular Applications
XL23684	36" X 84" (91cm x 213cm)	Superlight, reusable backwall or main graphic
XL23696	36" X 96" (91cm x 244cm)	
XL21884	18" X 84" (46cm x 213cm)	Multi-sided towers, for larger venue seminars and conferences, events, trade show displays – another travel and tourism favorite.
XL21896	18" X 96" (46cm x 244cm)	
		Just the right size for snap together square or triangular columns, or custom design add-ons to larger XL2 panels.



Select Xtra Lite's Superior Design & Technology

Always start with the top and bottom banner bars placed in the banner loops.



The elastic 'bungee cord' enables the quality Xtra Lite structure to straighten itself out quickly in less than a minute

Easy Setup Instructions



Next, put the lower leg tips through the base tripod rings and insert into the banner pole hubs (takes 2 mins.)



Insert top leg tips securely into the banner pole hubs (takes about 2 mins.)

Easy adjustment!



Assembled unit ready to work. Easy vertical angle adjustment where the "X" meets the tripod.

Travels in 3" shoulder case.



Read Setup Instructions included with each product. Safety glasses required at all times during setup.

Order online at expomax.com



Lighten up to do more!



Easy setup and handling

Full range of sizes

Why buy Xtra Lite® displays?

Your digital images are a mission critical extension of your corporate or association's identity. We are the best way to get your life-size digital images out there – and back.

See how Xtra Lite® enables you to control your digital graphics using a patented tension system. This is the same image architecture used by the world's top ad agencies and marketing professionals, available here and now.

We already have a portable display. Why change?

Xtra Lite® displays are often several times lighter than the pop-up displays that have dominated the display market for decades. **They almost set themselves up using our simple instructions.**

Why is Xtra Lite® the professional presenter's best travel companion?

It's so portable, lightweight, flexible, durable, reliable, and economical. Complete units start at around \$500.00 for the popular life-size 30" x 72" Xtra Lite® free standing unit, the XL1.

Easy to Order Digital Format

Look inside to choose a stand-alone Xtra Lite 1 unit or Xtra Lite 2 backwall or structures. See how easy it is to select the right Xtra Lite® hardware and quality digital graphic.

Why buy from ExpoMax?

Since 1996, ExpoMax has earned its credentials as a national account vendor, delivering directly to industry leaders. Our global references speak for themselves, and include the world's top marketers and digital printer manufacturers.

We are seasoned event and presentation professionals with decades of international experience, serving image conscious clients in Japan, Europe, and North America since 1996. We offer great graphics and can ship anywhere.

Call us today at **1-800-861-7051**. We can answer any questions you may have and help you decide how to meet your requirements. Or visit us online at expomax.com to make an inquiry or view our online presentations.



XL2 30" x 84", 3 units



XL2 30" x 84", 3 units



XL1 36" x 84", stand alone



XL1 36" x 84", 2 units

Global References

Alamo Rent-A-Car
American Embassy Tokyo
Arizona Office of Tourism
Babcock-Hitachi
Big Apple Golf
Boca Raton Resort
Charrette
CITIBANK Japan
Cruise Vacations, Inc.
Delta Air Lines
Dollar Rent-A-Car

Epson
European Union (Japan)
Fargo Printing
Ford Motor Co. Japan
Florida Keys
Hyundai Dept. Store
Genentech
Japan Electronic Products
Importers Association
Japan Management Assn.
Keio Department Store

kinkos
Kodak Japan
Konica Business Machines
Meynard Publishing
Miami CVB
Mitsubishi Paper Mills
Nihon Keizai Shimbun
Odakyu Dept. Store
Olympus
PGA Japan Office
Presentations Japan

Ricoh
Royal Caribbean
Cruise Lines
The Daily Yomiuri
TIME Magazine
Travel South
Tuttle Publishing
U.S. Dept. of Commerce
Virgin Atlantic Music
Wedgewood Breweries
Wyndham Hotel Group



ExpoMax Digital Media Systems, Ltd.
822 Ridley Creek Drive, Media, PA 19063
Phone: 610-876-9390 Fax: 610-876-9391

Call 800-861-7051 for more information

